



Beaufort County Public Works
Stormwater Infrastructure
Project Summary

Project Summary: Honeysuckle Lane

Activity: Routine/Preventive Maintenance

Duration: 12/07/17-02/21/18

Narrative Description of Project:

Project improved 430 L.F. of drainage system. Cleaned out 422 L.F. of roadside ditch. Jetted 8 L.F. of channel pipe, (1) crossline pipe and (2) driveway pipes.

2018-548 / Honeysuckle Lane	Labor Hours	Labor Cost	Equipment Cost	Material Cost	Contractor Cost	Indirect Labor	Total Cost
AUDIT / Audit Project	0.5	\$10.90	\$0.00	\$0.00	\$0.00	\$0.00	\$10.90
CLPJT / Crossline Pipe - Jetted	10.0	\$222.80	\$43.40	\$31.66	\$0.00	\$143.40	\$441.26
HAUL / Hauling	5.0	\$108.95	\$47.10	\$42.84	\$0.00	\$0.00	\$198.89
HEQ / Haul equipment	16.0	\$336.79	\$48.48	\$89.49	\$0.00	\$134.00	\$608.76
RSDCL / Roadside Ditch - Cleanout	20.0	\$403.20	\$103.89	\$36.78	\$0.00	\$188.25	\$732.12
UTLOC / Utility locates	0.5	\$12.35	\$0.00	\$0.00	\$0.00	\$6.62	\$18.97
2018-548 / Honeysuckle Lane Sub Total	52.0	\$1,094.99	\$242.87	\$200.77	\$0.00	\$472.26	\$2,010.89
Grand Total	52.0	\$1,094.99	\$242.87	\$200.77	\$0.00	\$472.26	\$2,010.89

Before

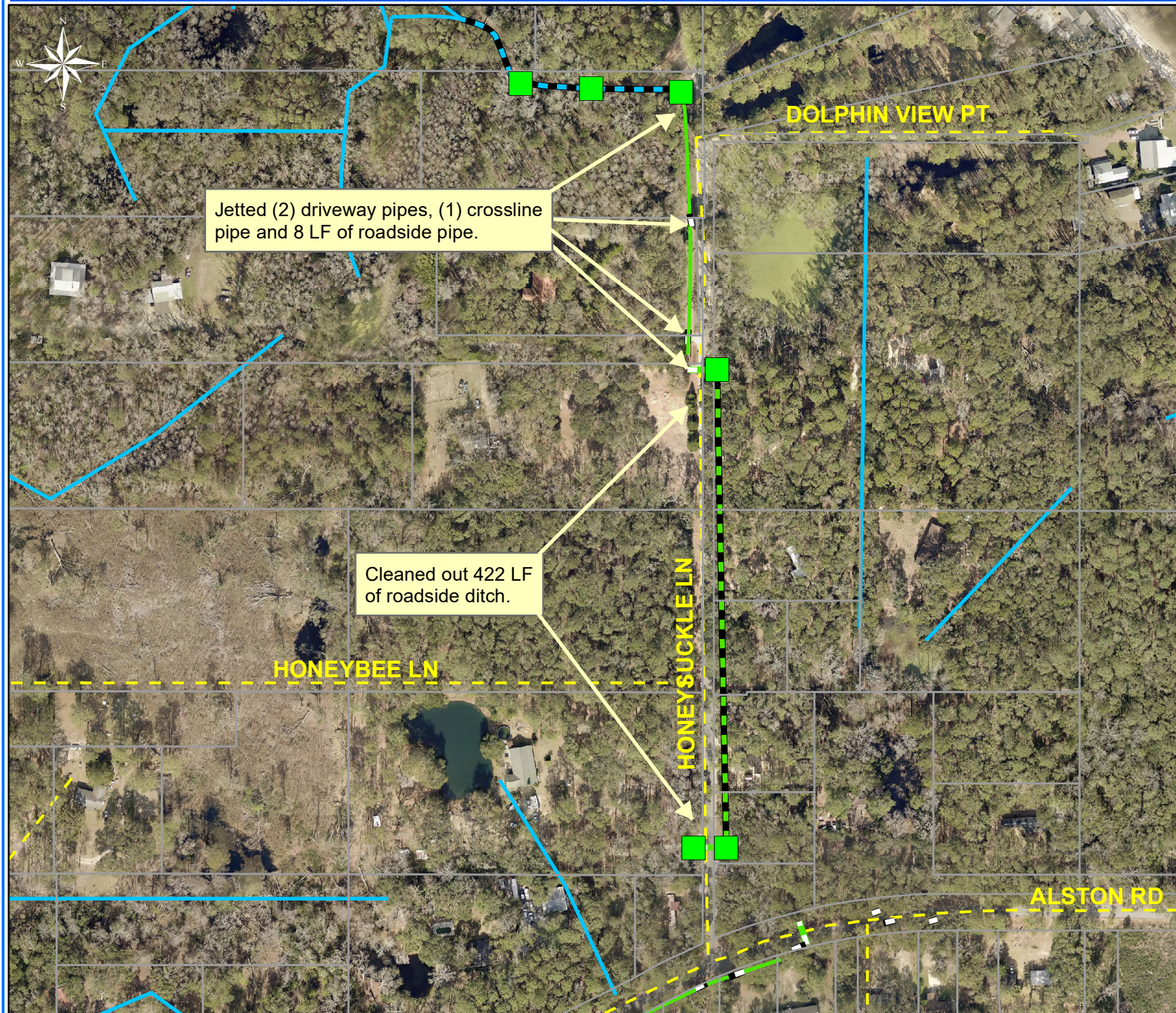


During



After





Project:
Honeysuckle
Lane

Activity: Routine/
Preventive
Maintenance

Project #:
2018-548

Township/SW Dist:
Lady's Island/7

Completed:
February 2018

Legend

Drainage Type

- Access Pipe
- Bleeder Pipe
- Channel Pipe
- Channel
- Stream
- Crossline Pipe
- Driveway Pipe
- Lateral
- Lateral Pipe
- River
- Road Pipe
- Roadside
- Roadside Pipe

0 60 120 240 360 480
Feet

1 inch = 250 feet

Prepared By: BC Stormwater Management Utility
Date Print: 04/11/18
File: C:\project summaries map\Honeysuckle Lane_2018-548